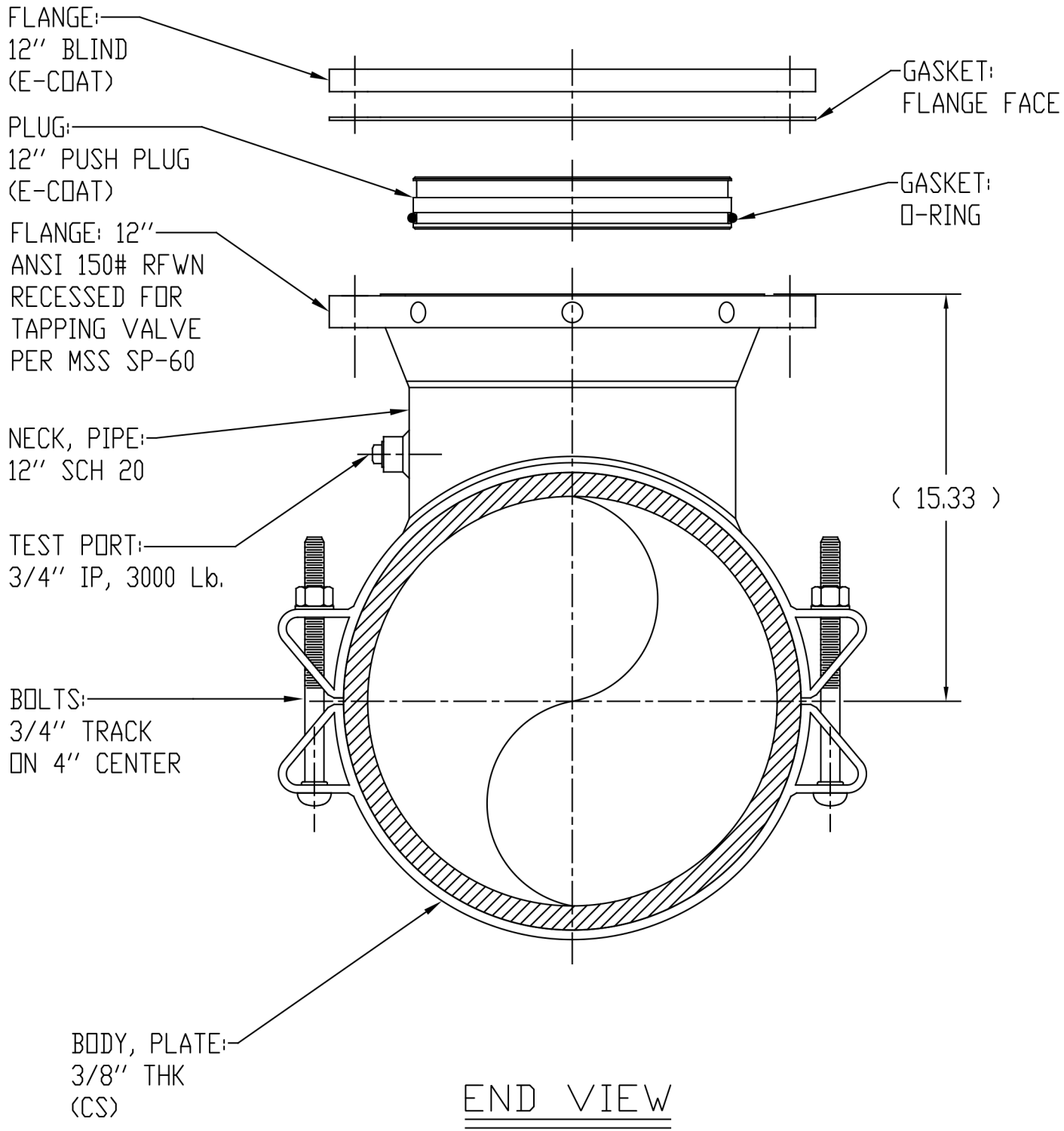


SECTION



END VIEW

NOTES:

1. DESIGN AND FAB PER AWWA C-223
2. WORKING PRESSURE: 150 PSI
3. FINISH: FUSION EPOXY COAT
4. FASTENERS: 304 SS
5. FAB TO LINE STOP ACCURACY

THIS DRAWING INCLUDING ALL NOVEL AND PATENTED OR PATENTABLE SUBJECT MATTER EMBODIES CONFIDENTIAL INFORMATION OF JCM INDUSTRIES, INC. AND IS LOANED WITH THE UNDERSTANDING THAT IT WILL NOT BE REPRODUCED NOR BE USED FOR ANY PURPOSE EXCEPT FOR WHICH LOANED UNLESS WRITTEN PERMISSION IS GRANTED BY THE OWNER AND THAT IT SHALL BE RETURNED UPON DEMAND.

					<div>JCM</div> <div>JCM INDUSTRIES, INC. NASH, TX.</div> <div>P.O. BOX 1220 NASH, TX 75569 www.jcmindustries.com</div> <div>OFFICE: (903) 832-2581 TOLL FREE: (800) 527-8482 FAX: (800) 874-9524</div>	440-14", 16", 18", 20" x 12" T 12 ESS											
						CARBON STEEL LINE STOP FITTING											
						UNLESS OTHERWISE SPECIFIED TOLERANCES TO BE	DRAWN BY BDR		CHECKED BY -----	APVD. BY -----	DWG. NO. GEN-017672	REV. --					
						FRACTIONS	DECIMALS	ANGLES	DATE	NO. SHEETS	SCALE	PART NO.					
REVISIONS	DATE	S	BY	APVD.		± 1/4"	.125	5°	06/07/19	1 of 1	-----	-----					